

Project Organization

A Path to Resilience

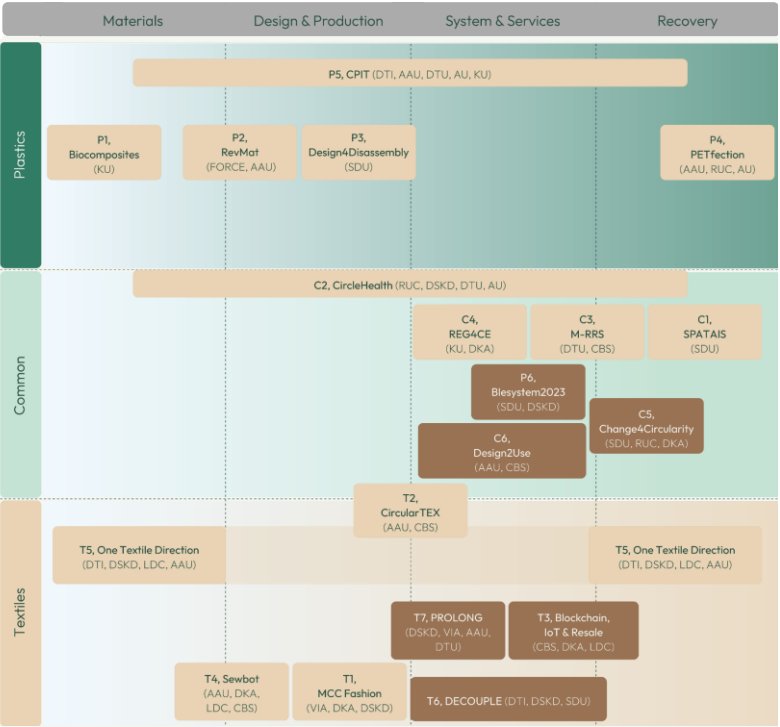
2025

Pool 4 & 5
Innomission 4

Consolidating portfolio into Work Stream Focus Areas to build Proof of Concept CE Systems

In pool 4&5 TRACE is consolidating it's project portfolio into 3 Work Stream Focus Areas (WSFA), each targeting a value chain with high potential.

Value chain selection: 1. Danish position of strength within specific sector; 2. Relatively high circular maturity; 3. Synergies to TRACE's existing project portfolio; 4. High likelihood of developing solutions with high scaling- and impact potential



Plastics
Work Stream Focus Area:
Circular solutions to plastics in the food industry
4–5 projects (pool 5)

Common
Work Stream Focus Area:
Circular solutions to single-use plastics and textiles in the healthcare sector
4–6 projects (pool 4)

Textiles
Work Stream Focus Area:
Circular Services and Solutions for Extending the Lifespan of Applied Textiles
4–6 (pool 4)

Strategic Purpose of Work Stream Focus Areas

The Work Stream Focus Areas will output Proof of Concept CE Systems that integrate solutions across the target value chain.

Each PoC CE System is designed to:

- **Integrate technical**, business, behavioral, policy, and infrastructure solutions across the entire value chain
- **Address structural barriers** to circularity across sectors and materials
- **Ensure business viability** and reduce investment risks through internationally scalable design
- **Align with regulation** and public procurement, embedding circularity into real-world systems
- **Be resilient** to geopolitical and market volatility
- **Scale across value chains** and borders
- **Support the EU's competitiveness** and circularity strategies



Plastics
Proof of Concept CE System



Commons
Proof of Concept CE System



Textiles
Proof of Concept CE System

Collaborative Contribution to PoC CE Systems

Each Work Stream Focus Area (WSFA) under TRACE Call 2025 aims to develop and demonstrate a Proof-of-Concept Circular Economy System (PoC CE System) for a selected value chain.

This PoC CE System is not the output of a single project, but the result of coordinated efforts across several strategically aligned projects.

Participating projects are not expected to deliver fully integrated PoC CE Systems on their own. Instead, they must:

- Deliver circular solutions that target specific points along the selected value chain
- Contribute to the joint development of a PoC CE System by aligning with shared learning goals, data structures, and coordination platforms
- Participate in joint activities (via Work Package 1) that integrate knowledge, evidence, and infrastructure across the WSFA

The combined outputs of the WSFA — when assembled — will form a validated PoC CE System: a functional, scalable demonstration of a circular value chain capable of driving systemic change.

Work Package 1 – the Collaborative Backbone

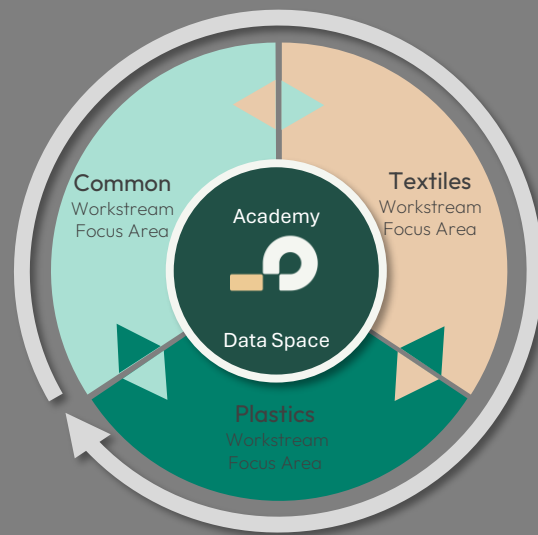
Work Package 1 forms the collaborative backbone of TRACE Call 2025. It is designed to foster synergy, scalability, and shared learning across all funded projects.

Each project must allocate 2% of its TRACE funding to WP1 and appoint a Principal Investigator (PI) and a Project Implementation Lead (PIL) to lead contributions to this work package. PI/partners must commit to:

- **Engage with TRACE Data Space** – Ensure data sharing and impact measurement.
- **Contribute to TRACE Communication** – Provide updates and insights to relevant stakeholders.
- **Utilize TRACE Academy** – Participate in training, capacity-building activities and stakeholder dialogue.
- **Implement Double-Loop Feedback** – Define a strategy for continuous learning and biannual reporting.
- **Align with previous pools (1-3)** – Build on insights and accelerate systemic impact.

For more details see the document
Work Package 1 - TRACE Collaborative Platform_ A Path to Resilience 2025

TRACE's Collaborative Platform



Examples of how PoC CE Systems could look



Plastics WSFA PoC CE System

A system for reducing plastic waste in the food sector by testing reuse, refill, and recyclable packaging models across the value chain. It integrates:

- Material innovation (e.g. bio-based or recyclable plastics)
- Circular business models for food packaging
- Regulatory alignment with the EU Packaging and Packaging Waste Regulation
- Shared infrastructure across stakeholders



Commons WSFA PoC CE System

A system combining circular innovation in materials and operations for healthcare-related single-use items. It integrates:

- Reusable and recyclable alternatives to disposables
- Shared infrastructure (e.g. sterilization hubs, logistics)
- Sector-specific procurement reform
- Coordinated innovation across plastics and textiles



Textiles WSFA PoC CE System

A system of service-based circular textile solutions (e.g. repair, joint ownership, reuse) targeting applied sectors like healthcare. It integrates:

- Business models extending product lifespans
- Systems for joint procurement or ownership
- Design for longevity and recyclability